



## 8" Smart Valve Cut Sheet

### Materials

Acetron GP

Stainless Steel

Aluminum (flange – no water or pipe contact)

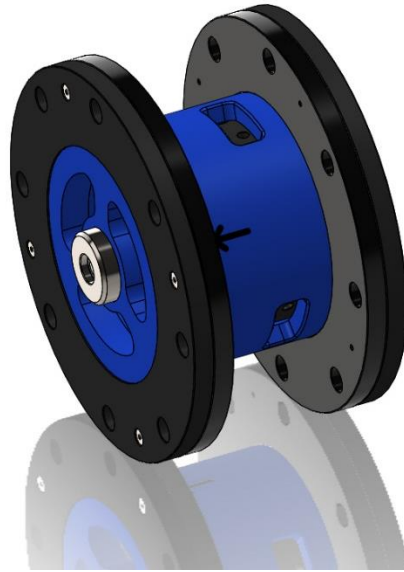
FDA approved internal o-rings

### Certifications

NSF 61 (potable water)

NSF 372 (lead free)

Certifying laboratory: IAPMO R&T



### Installation Dimensions

#### **8" SMART VALVE:**

|                                |               |
|--------------------------------|---------------|
| Body Length – Flange to Flange | 7.82"         |
| Bolt Pattern                   | Standard      |
| Bolt Holes                     | Through Holes |
| Shipping Weight                | 39 lbs        |

For best results install the Smart Valve downstream of water meter and backflow preventer (if present), but before any other valves or equipment such as a pressure reducer or booster pump. Where *possible* it is recommended (but not critical) to have 10 diameters of straight pipe before and after the valve. All flanged installations to use gaskets at each flange.

**IMPORTANT:** If the pipe the Smart Valve is being installed in is used as a Ground Fault Line, The Smart Valve will NOT conduct a current through the pipe without a grounding strap. As a precaution, ALWAYS use a ground strap across the valve from pipe to pipe.